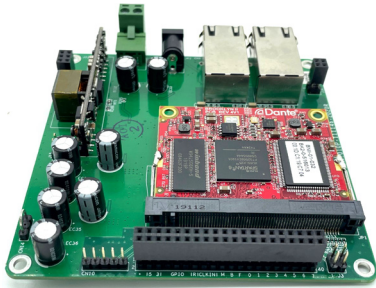


# DAMP16

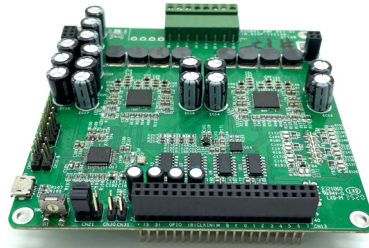
# 16 Channel 40W Amplifier Dante Input at 250us Latency 802.3at 30W PoE or 24V 15A



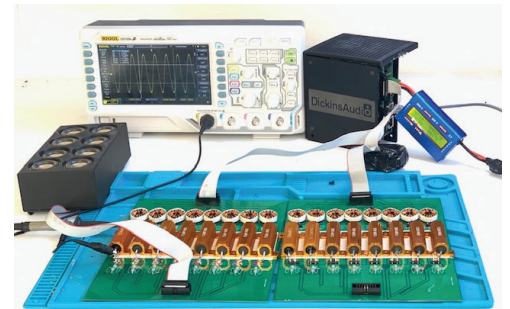
Designed for scale, these amps punch well above their size. Dante input provides convenient connection directly over ethernet to your PC or other audio gear.



**Dante Base Board**



**Amps 2 x Infineon MA-12070P**



**Full load stress testing**

PRICE	\$2,299	\$2,499	AUD
CHANNELS	16	16	
MODEL	DAMP16-90	DAMP16-250	
Peak Output Voltage @0dBfs	18V Soft Clip	20V	
Output Voltage RMS @-6dB rms	10V rms		Calibrated Independent of Power
Peak Power per Channel	40W rms		Brief peak or sustained 1ch per board
Peak Power Channels Sum	90W rms	250W rms	
Peak Power per Channel on PoE	15W rms		PoE Provides only 12V peak
Peak Power Channel Sum on PoE	20W rms		802.3at (Limited to avoid cutout)
Connectors	4 x 8 way 3.81mm Phoenix Connectors		Adaptor option for 2 x IDC 16 Ribbon
Frequency Response	10 Hz - 22 kHz +/- 0.5dB		With Dante 48kHz Input
THD	0.01% @ 1kHz, 10W typical		Subject to Power Sum Limit
Cooling	Passive Convection with Vented Enclosure		Must sit in open space, not covered
Operating Temperature	Suggested ambient < 30degC (90 degF)		Higher ambient may lower power sum
Protection	Individual amp thermal and 5.5A current over		Momentary Shutdown - Click
	Full system thermal shutdown		Full Shutdown whilst cooling
	Over-current limit from PoE to Amps		PoE kept alive, amps will clip
Dimensions - W X D X H mm	127 x 118 x 122		Case is PLA and Acrylic
Power Supply Provided	19V 90W DC Plug	24V 250W 5mm Phoenix	80-260V AC Input
PoE Option	802.3at Provides Stability and additional power		
Required Network Switch	>= 100Mb 1Gb Suggested Ensure EEE disabled		Unifi Equipment Preferred